

**SPEIRS  
MAJOR**

Beijing International Airport,  
China

**LIGHT  
ARCHITECTURE**

8 Shepherdess Walk  
London,  
N1 7LB  
United Kingdom

T +44 (0)20 7067 4700

Co-lab Shibuya Cast  
23-21, Shibuya 1-Chome  
Tokyo 150-0002  
Japan

T +81 (0)3 3400 8855

[info@smlightarchitecture.com](mailto:info@smlightarchitecture.com)  
[press@smlightarchitecture.com](mailto:press@smlightarchitecture.com)

# SPEIRS MAJOR



The glowing coloured terminal roof is a striking centrepiece to the scheme, gradually morphing from red to yellow along the length of the building.

CLIENT  
Beijing Capital  
International Airport

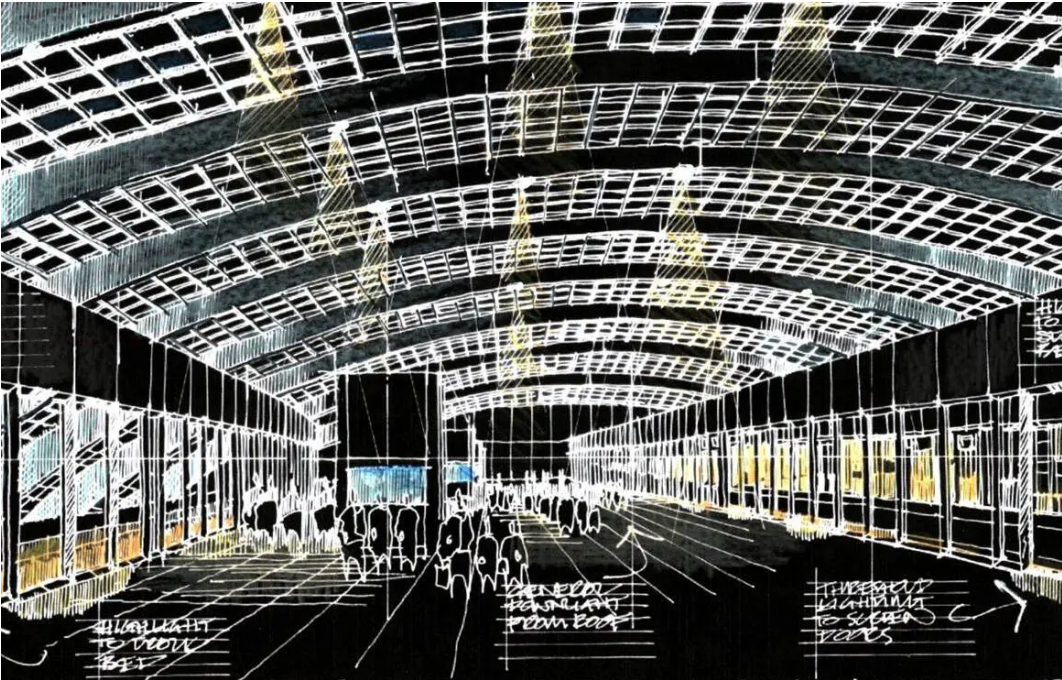
ARCHITECT  
Foster + Partners

PHOTOGRAPHER  
Fu Xing

PROJECT TEAM  
Mark Major, Philip  
Rose



# SPEIRS MAJOR





# SPEIRS MAJOR

At the time of construction, Beijing's new international terminal was the world's largest and most advanced airport.

We had just three months to develop a lighting concept with sufficient detail to brief local engineers. Our previous experience of handling large airport projects (Terminal 5, Heathrow and Barajas Airport, Madrid) paid dividends: we quickly disseminated the brief, asked the right questions and agreed an approach in record time.

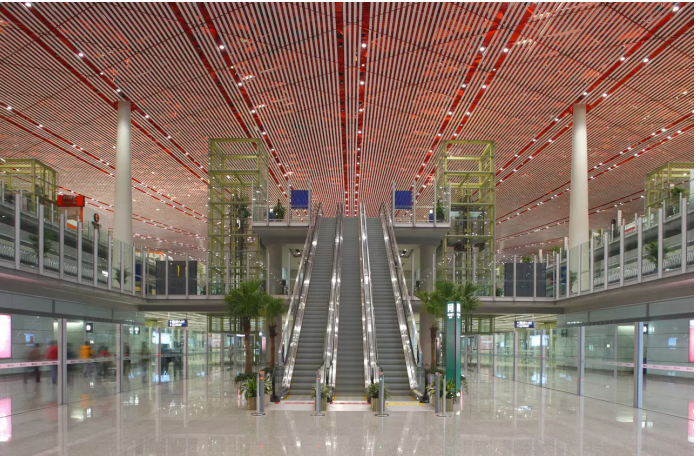
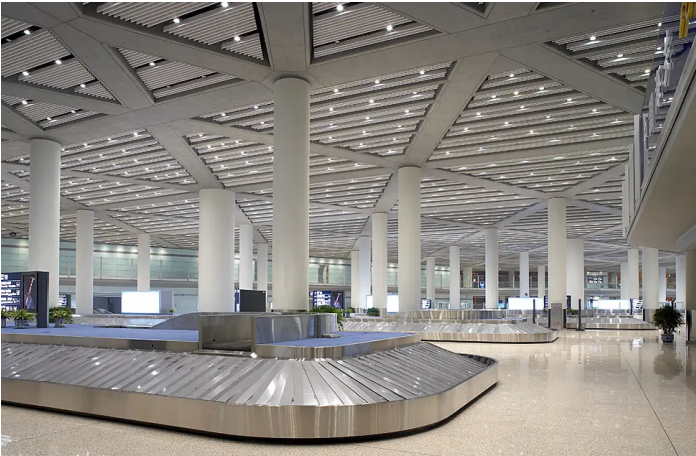
Our design consists of three lighting components: a general lighting system, which provides functional lighting; common circulation lighting, which helps route passengers; and fit-out lighting which brings accent and drama.

For the general lighting we devised a high-level system that is integrated above the slatted roof and mounted on gantries providing easy access for maintenance. This illuminates the principle volumes and provides feature lighting to the roof and structure.





# SPEIRS MAJOR



**SPEIRS MAJOR**

